

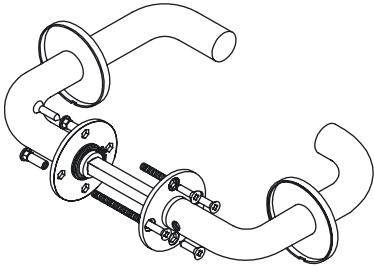
FIXING INSTRUCTIONS (N.S.L.)

Standard bolt through fixings and spindles are provided to suit door thickness 40 to 50mm.

For thicker doors, door thickness should be stated and longer fixings and spindles requested.

The lever handles are fixed to a special spindle by way of a threaded grub screw passing through the neck of the lever and breaking into the spindle. This type of fixing is extremely secure and allows for both easy and accurate adjustment of the door furniture.

The lever and rose/plate are supplied with the following fittings:



- A1 A2 x2 **A. Bolt-through Fixing**
- x4 **B. Wood Screws**
- x1 **C. Spindle**
- x2 **D. Grub Screw**
- x1 **E. Allen Key**

FIXING

1. Prepare the door as shown in (Fig 1) by drilling 25mm hole in line with the follower backset
2. Insert the spindle (Fig 2) in one lever so that the centreline of the spindle is central within the door thickness and with the off-centre spindle hole (Fig 3) facing the grub screw in the lever.
3. Loosely engage the grub screw in the spindle with the allen key provided.
4. Place the lever and inner rose/plate in position on the door, with the spindle inserted through the lock follower (Fig 4). Secure with 2 wood screw fixings (A1) provided in vertical alignment.

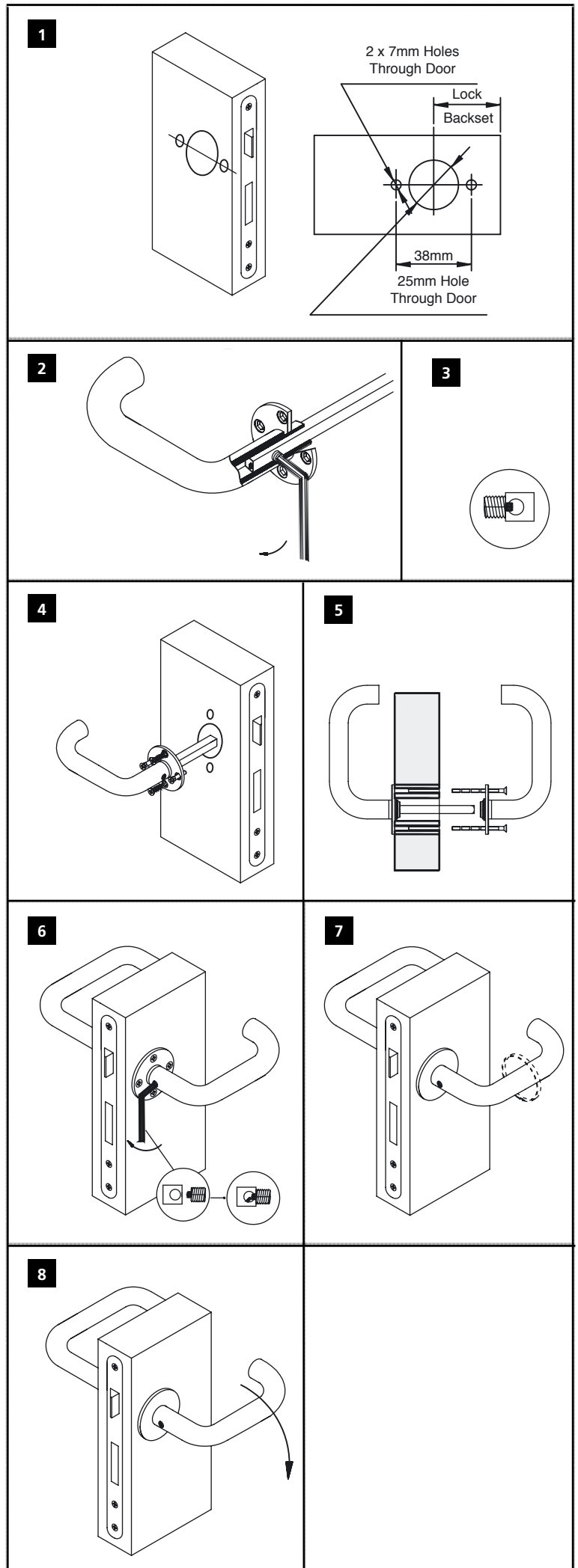
Position the other lever and inner rose/plate on the opposite side of the door (Fig 4). Secure with 2 wood screw fixings (A2) in vertical alignment.

Drill horizontal fixing holes and secure inner rose/plate with bolt through fixings and tighten to ensure stable fixing. (Fig 5)

Tighten the wood screw fixings and check the lever operate freely.

CAUTION: Over-tightening of screw or bolt-through fixings may restrict freedom of movement between lever and rose/plates.

6. Tighten the grub screw in the lever past the point of grub screw penetrates into the bore hole of the spindle. (Fig 6)
7. Place the outer cover firmly on the inner rose/plate. (Fig 7)
8. Check that the lever operates freely. (Fig 8)



CATEGORY OF USE	DURABILITY	DOOR MASS	FIRE RESISTANCE	SAFETY	CORROSION RESISTANCE	TYPE OF OPERATION
4	7	-	1	1	4	U